

Test Report

No. LPCI/11468-2/09

Date : 14/07/2009

Page: 1 of 6

CTS Ref. CTS/09/2714/Touch Chem-Afcona

**TOUCH CHEM (M) SDN. BHD. / AFCONA ADDITIVES SDN. BHD.
NO.22, JALAN ANGGERIK MOKARA 31/64, KOTA KEMUNING,
40460 SHAH ALAM, SELANGOR DARUL EHSAN.**

The following merchandise was (were) submitted and identified by the client as:

Sample Description : Mixture of Touch Otal 2002, Touch Otal 2003, Touch Otal 2006,
Touch Otal 2008, Touch Otal 2009, Touch Anset 3000,
Touch Anset 3010 and Touch Anset 3300.
Sample Receiving Date : 08/07/2009
Testing Period : 08/07/2009 to 10/07/2009

Test Results : Please refer to next page.

Analyst : Yee Sook Wai

SGS LABORATORY SERVICES (M) SDN. BHD.



CHONG KIEN LEN
B.Sc.(HONS) AMIC
LAB MANAGER

This document is issued by the Company subject to its General Conditions of Service printed overleaf, available on request or accessible at www.sgs.com/terms_and_conditions.htm and, for electronic format documents, subject to Terms and Conditions for Electronic Documents at www.sgs.com/terms_e-document.htm. Attention is drawn to the limitation of liability, indemnification and jurisdiction issues defined therein. Any holder of this document is advised that information contained hereon reflects the Company's findings at the time of its intervention only and within the limits of Client's instructions, if any. The Company's sole responsibility is to its Client and this document does not exonerate parties to a transaction from exercising all their rights and obligations under the transaction documents. This document cannot be reproduced except in full, without prior written approval of the Company. Any unauthorized alteration, forgery or falsification of the content or appearance of this document is unlawful and offenders may be prosecuted to the fullest extent of the law. Unless otherwise stated the results shown in this test report refer only to the sample(s) tested and such sample(s) are retained for three months only.

Test Report

No. LPCI/11468-2/09

Date : 14/07/2009

Page: 2 of 6

CTS Ref. CTS/09/2714/Touch Chem-Afcona

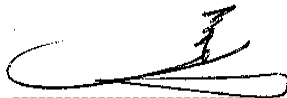
Test results by chemical method:

Test Item (s):	Unit	Method	MDL	Result
Polycyclic Aromatic Hydrocarbons (PAHs)	---	---	---	---
Naphtalene (CAS No.: 000091-20-3)	mg/kg	With reference to ZLS standard ZEK 01.1-08. Analysis was performed by GC/MS.	0.2	N.D.
Acenaphthylene (CAS No.: 00208-96-8)	mg/kg	With reference to ZLS standard ZEK 01.1-08. Analysis was performed by GC/MS.	0.2	N.D.
Acenaphthene (CAS No.: 000083-32-9)	mg/kg	With reference to ZLS standard ZEK 01.1-08. Analysis was performed by GC/MS.	0.2	N.D.
Fluorene (CAS No.: 000086-73-7)	mg/kg	With reference to ZLS standard ZEK 01.1-08. Analysis was performed by GC/MS.	0.2	N.D.
Phenanthrene (CAS No.: 000085-01-8)	mg/kg	With reference to ZLS standard ZEK 01.1-08. Analysis was performed by GC/MS.	0.2	N.D.
Anthracene (CAS No.: 000120-12-7)	mg/kg	With reference to ZLS standard ZEK 01.1-08. Analysis was performed by GC/MS.	0.2	N.D.
Fluoranthene (CAS No.: 000206-44-0)	mg/kg	With reference to ZLS standard ZEK 01.1-08. Analysis was performed by GC/MS.	0.2	N.D.
Pyrene (CAS No.: 000129-00-0)	mg/kg	With reference to ZLS standard ZEK 01.1-08. Analysis was performed by GC/MS.	0.2	N.D.
Benzo[a]anthracene (CAS No.: 000056-55-3)	mg/kg	With reference to ZLS standard ZEK 01.1-08. Analysis was performed by GC/MS.	0.2	N.D.
Chrysene (CAS No.: 000218-01-9)	mg/kg	With reference to ZLS standard ZEK 01.1-08. Analysis was performed by GC/MS.	0.2	N.D.

Test Part Description :

Sample Description : Mixture of Touch Otal 2002, Touch Otal 2003, Touch Otal 2006, Touch Otal 2008, Touch Otal 2009, Touch Anset 3000, Touch Anset 3010 and Touch Anset 3300.

SGS LABORATORY SERVICES (M) SDN. BHD.



CHONG KIEN LEN
B.Sc.(HONS) AMIC
LAB MANAGER

This document is issued by the Company subject to its General Conditions of Service printed overleaf, available on request or accessible at www.sgs.com/terms_and_conditions.htm and, for electronic format documents, subject to Terms and Conditions for Electronic Documents at www.sgs.com/terms_e-document.htm. Attention is drawn to the limitation of liability, indemnification and jurisdiction issues defined therein. Any holder of this document is advised that information contained hereon reflects the Company's findings at the time of its intervention only and within the limits of Client's instructions, if any. The Company's sole responsibility is to its Client and this document does not exonerate parties to a transaction from exercising all their rights and obligations under the transaction documents. This document cannot be reproduced except in full, without prior written approval of the Company. Any unauthorized alteration, forgery or falsification of the content or appearance of this document is unlawful and offenders may be prosecuted to the fullest extent of the law. Unless otherwise stated the results shown in this test report refer only to the sample(s) tested and such sample(s) are retained for three months only.

Test Report

No. LPCI/11468-2/09

Date : 14/07/2009

Page: 3 of 6

CTS Ref. CTS/09/2714/Touch Chem-Afcona

Test results by chemical method:

Test Item (s):	Unit	Method	MDL	Result
Polycyclic Aromatic Hydrocarbons (PAHs)	---	---	---	---
Benzo[b]fluoranthene (CAS No.: 000205-99-2)	mg/kg	With reference to ZLS standard ZEK 01.1-08. Analysis was performed by GC/MS.	0.2	N.D.
Benzo[k]fluoranthene (CAS No.: 000207-08-9)	mg/kg	With reference to ZLS standard ZEK 01.1-08. Analysis was performed by GC/MS.	0.2	N.D.
Benzo[a]pyrene (CAS No.: 000050-32-8)	mg/kg	With reference to ZLS standard ZEK 01.1-08. Analysis was performed by GC/MS.	0.2	N.D.
Dibenzo[a,h]anthracene (CAS No.: 000053-70-3)	mg/kg	With reference to ZLS standard ZEK 01.1-08. Analysis was performed by GC/MS.	0.2	N.D.
Benzo[g,h,i]perylene (CAS No.: 000191-24-2)	mg/kg	With reference to ZLS standard ZEK 01.1-08. Analysis was performed by GC/MS.	0.2	N.D.
Indeno[1,2,3-c,d]pyrene (CAS No.: 000193-39-5)	mg/kg	With reference to ZLS standard ZEK 01.1-08. Analysis was performed by GC/MS.	0.2	N.D.
Sum of 16 PAHs	mg/kg	With reference to ZLS standard ZEK 01.1-08. Analysis was performed by GC/MS.	-	N.D.

Test Part Description :

Sample Description : Mixture of Touch Otal 2002, Touch Otal 2003, Touch Otal 2006, Touch Otal 2008, Touch Otal 2009, Touch Anset 3000, Touch Anset 3010 and Touch Anset 3300.

- Note :
- (a) mg/kg = ppm
 - (b) N.D. = Not Detected
 - (c) MDL = Method Detection Limit
 - (d) --- = Not Conducted
 - (e) Testing based on original basis

SGS LABORATORY SERVICES (M) SDN. BHD.



CHONG KIEN LEN
B.Sc.(HONS) AMIC
LAB MANAGER

This document is issued by the Company subject to its General Conditions of Service printed overleaf, available on request or accessible at www.sgs.com/terms_and_conditions.htm and, for electronic format documents, subject to Terms and Conditions for Electronic Documents at www.sgs.com/terms_e-document.htm. Attention is drawn to the limitation of liability, indemnification and jurisdiction issues defined therein. Any holder of this document is advised that information contained hereon reflects the Company's findings at the time of its intervention only and within the limits of Client's instructions, if any. The Company's sole responsibility is to its Client and this document does not exonerate parties to a transaction from exercising all their rights and obligations under the transaction documents. This document cannot be reproduced except in full, without prior written approval of the Company. Any unauthorized alteration, forgery or falsification of the content or appearance of this document is unlawful and offenders may be prosecuted to the fullest extent of the law. Unless otherwise stated the results shown in this test report refer only to the sample(s) tested and such sample(s) are retained for three months only.

Reference information:

Requirement of ZEK 01.1-08 : Restraining maximum values for products

Parameter	Category 1	Category 2	Category 3
	Material in contact with foodstuff or materials which are meant to put in the mouth as well as toys for children <36 months	Materials with foreseeable skin contact >30 s (prolonged skin contact) and toys not covered by category 1	Materials with foreseeable skin contact <30 s (short time skin contact) or without skin contact
Benzo[a]pyrene (mg/kg)	<MDL (<0.2)**	1	20
Sum 16 PAH (EPA) (mg/kg)*	<MDL (<0.2)**	10	200

* = Only PAH substances >0.2 mg/kg are taken into account while calculating the sum of PAHs

** = In case that the maximum values exceed the limits of category 1, but are within the limits of category 2, one may confirm the suitability of the tested material for contact with foodstuff or oral mucosa by additional specific migration tests of PAH components based on DIN EN 1186ff and §64 LFGB 80.30-1. The conclusion of the migration test results must be made based on food law criteria.

SGS LABORATORY SERVICES (M) SDN. BHD.



CHONG KIEN LEN
B.Sc.(HONS) AMIC
LAB MANAGER

This document is issued by the Company subject to its General Conditions of Service printed overleaf, available on request or accessible at www.sgs.com/terms_and_conditions.htm and, for electronic format documents, subject to Terms and Conditions for Electronic Documents at www.sgs.com/terms_e-document.htm. Attention is drawn to the limitation of liability, indemnification and jurisdiction issues defined therein. Any holder of this document is advised that information contained hereon reflects the Company's findings at the time of its intervention only and within the limits of Client's instructions, if any. The Company's sole responsibility is to its Client and this document does not exonerate parties to a transaction from exercising all their rights and obligations under the transaction documents. This document cannot be reproduced except in full, without prior written approval of the Company. Any unauthorized alteration, forgery or falsification of the content or appearance of this document is unlawful and offenders may be prosecuted to the fullest extent of the law. Unless otherwise stated the results shown in this test report refer only to the sample(s) tested and such sample(s) are retained for three months only.

Test Report

No. LPCI/11468-2/09

Date : 14/07/2009

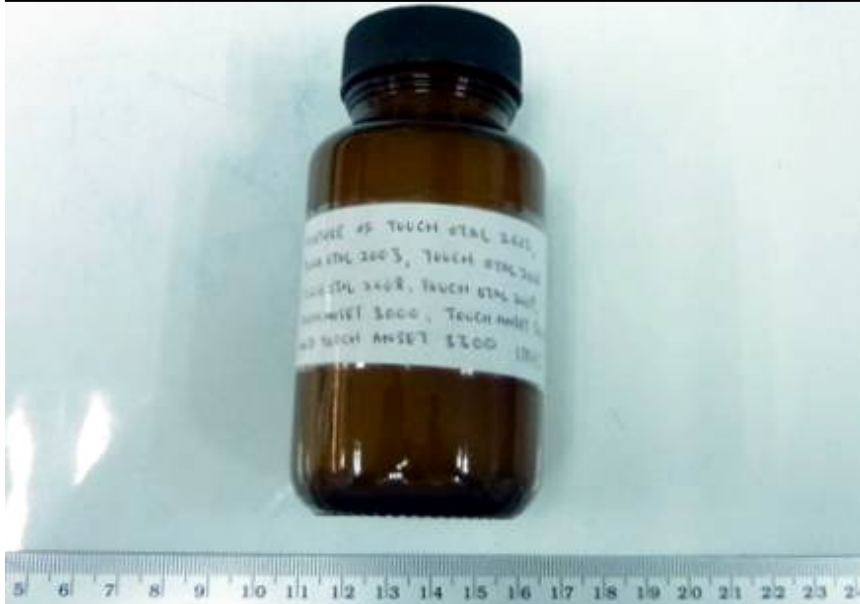
Page: 5 of 6

CTS Ref. CTS/09/2714/Touch Chem-Afcona

Test Part Description :

Sample Description : Mixture of Touch Otal 2002, Touch Otal 2003, Touch Otal 2006, Touch Otal 2008, Touch Otal 2009, Touch Anset 3000, Touch Anset 3010 and Touch Anset 3300.

**TOUCH CHEM (M) SDN. BHD. / AFCONA ADDITIVES SDN. BHD.
LPCI/11468-2/09**

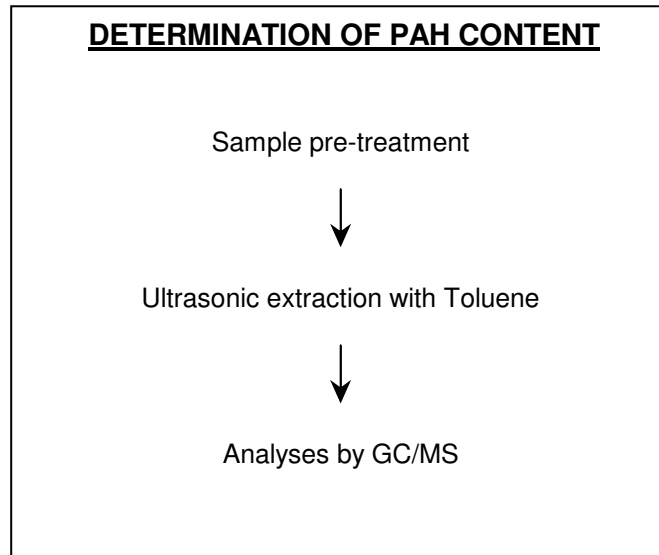


SGS LABORATORY SERVICES (M) SDN. BHD.

CHONG KIEN LEN
B.Sc.(HONS) AMIC
LAB MANAGER


This document is issued by the Company subject to its General Conditions of Service printed overleaf, available on request or accessible at www.sgs.com/terms_and_conditions.htm and, for electronic format documents, subject to Terms and Conditions for Electronic Documents at www.sgs.com/terms_e-document.htm. Attention is drawn to the limitation of liability, indemnification and jurisdiction issues defined therein. Any holder of this document is advised that information contained hereon reflects the Company's findings at the time of its intervention only and within the limits of Client's instructions, if any. The Company's sole responsibility is to its Client and this document does not exonerate parties to a transaction from exercising all their rights and obligations under the transaction documents. This document cannot be reproduced except in full, without prior written approval of the Company. Any unauthorized alteration, forgery or falsification of the content or appearance of this document is unlawful and offenders may be prosecuted to the fullest extent of the law. Unless otherwise stated the results shown in this test report refer only to the sample(s) tested and such sample(s) are retained for three months only.

FLOWCHART:



**** End of Report ****

SGS LABORATORY SERVICES (M) SDN. BHD.



CHONG KIEN LEN
B.Sc.(HONS) AMIC
LAB MANAGER

This document is issued by the Company subject to its General Conditions of Service printed overleaf, available on request or accessible at www.sgs.com/terms_and_conditions.htm and, for electronic format documents, subject to Terms and Conditions for Electronic Documents at www.sgs.com/terms_e-document.htm. Attention is drawn to the limitation of liability, indemnification and jurisdiction issues defined therein. Any holder of this document is advised that information contained hereon reflects the Company's findings at the time of its intervention only and within the limits of Client's instructions, if any. The Company's sole responsibility is to its Client and this document does not exonerate parties to a transaction from exercising all their rights and obligations under the transaction documents. This document cannot be reproduced except in full, without prior written approval of the Company. Any unauthorized alteration, forgery or falsification of the content or appearance of this document is unlawful and offenders may be prosecuted to the fullest extent of the law. Unless otherwise stated the results shown in this test report refer only to the sample(s) tested and such sample(s) are retained for three months only.